



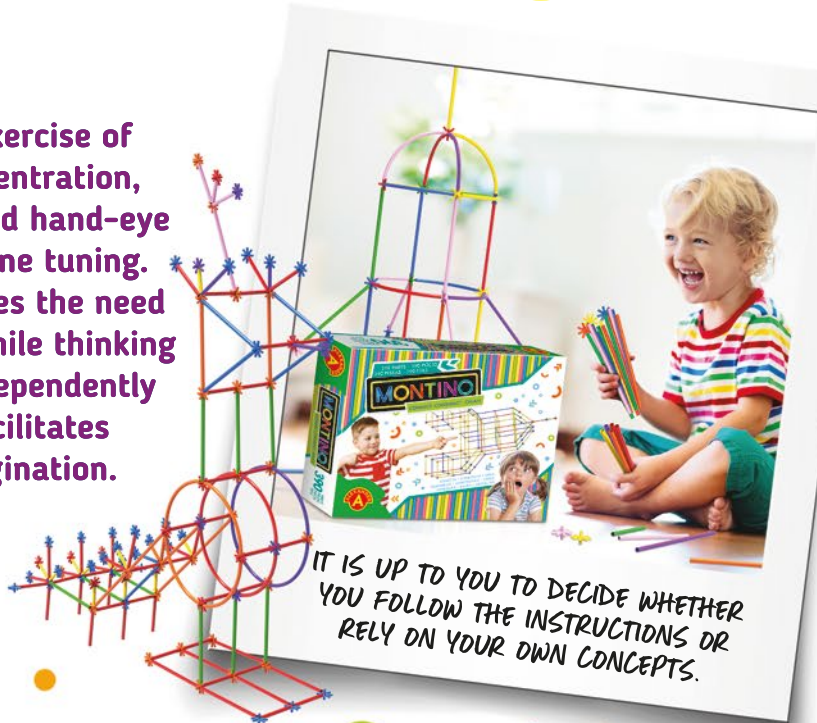
# MONTINO

CONNECT - CONSTRUCT - CREATE

**YOU ARE ONLY LIMITED  
BY YOUR IMAGINATION**



An excellent exercise of planning, concentration, motor skills and hand-eye coordination fine tuning. The toy satisfies the need for creating while thinking and acting independently and greatly facilitates children's imagination.



IT IS UP TO YOU TO DECIDE WHETHER  
YOU FOLLOW THE INSTRUCTIONS OR  
RELY ON YOUR OWN CONCEPTS.

# CONNECTORS WITH 10 TABS, ALLOWING YOU TO CREATE CONSTRUCTIONS ON THE BASIS OF A CIRCLE



Fun is made easy by the included instruction, which is full of delicious ideas.

## MONTINO 75 · · · · · Prod. No. 2413

5+	1+	76	8	19.5/18.5/5.5	34/30.5/21
AGE	PLAYERS	ELEMENTS	ITEMS IN MULTI-PIECE PACKAGE	ITEM DIMENSIONS	MULTI-PIECE PACKAGE DIMENSIONS



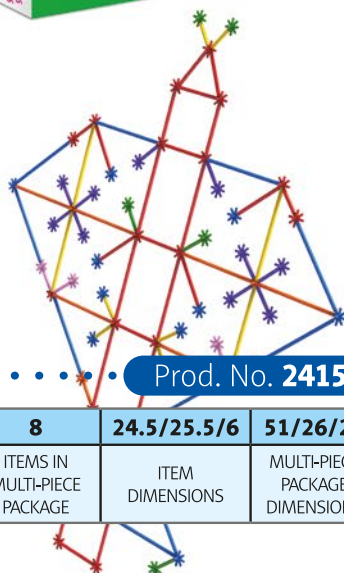
## MONTINO 155 · · · · · Prod. No. 2414

5+	1+	156	7	24.5/20.5/5.5	34/30.5/21
AGE	PLAYERS	ELEMENTS	ITEMS IN MULTI-PIECE PACKAGE	ITEM DIMENSIONS	MULTI-PIECE PACKAGE DIMENSIONS



## MONTINO 230 · · · · · Prod. No. 2415

5+	1+	231	8	24.5/25.5/6	51/26/26
AGE	PLAYERS	ELEMENTS	ITEMS IN MULTI-PIECE PACKAGE	ITEM DIMENSIONS	MULTI-PIECE PACKAGE DIMENSIONS



# CREATION IS AN INTEGRAL PART OF CHILDREN'S ACTIVITY

## MONTINO 310..... Prod. No. 2416

5+	1+	311	6	30.5/29.5/7	38/31/39
AGE	PLAYERS	ELEMENTS	ITEMS IN MULTI-PIECE PACKAGE	ITEM DIMENSIONS	MULTI-PIECE PACKAGE DIMENSIONS



## MONTINO 390..... Prod. No. 2417

5+	1+	391	8	38/30/7	46.5/39/30.5
AGE	PLAYERS	ELEMENTS	ITEMS IN MULTI-PIECE PACKAGE	ITEM DIMENSIONS	MULTI-PIECE PACKAGE DIMENSIONS



The various sets allow you to create both smaller constructions and huge ones like a boat, plane or space base.

## MONTINO 470..... Prod. No. 2418

5+	1+	471	6	41.5/28/10	40/30/43
AGE	PLAYERS	ELEMENTS	ITEMS IN MULTI-PIECE PACKAGE	ITEM DIMENSIONS	MULTI-PIECE PACKAGE DIMENSIONS



# OEM POSSIBILITIES



The pack contains colourful straws in three lengths (12 cm; 14 cm; 9 cm) and connectors. Each set comes with catalogues with inspirations.



- Six different product sizes, from beginner 75 elements up to the advanced 470 elements sets.
- Multi-language packaging.

**Contact person:**

Mark Williams

Mobile: +48 606 314 735

E-mail: [m.williams@alexandertoys.com](mailto:m.williams@alexandertoys.com)

Z.P. Alexander  
ul. Telewizyjna 19  
80-209 Chwaszczyno  
Poland

